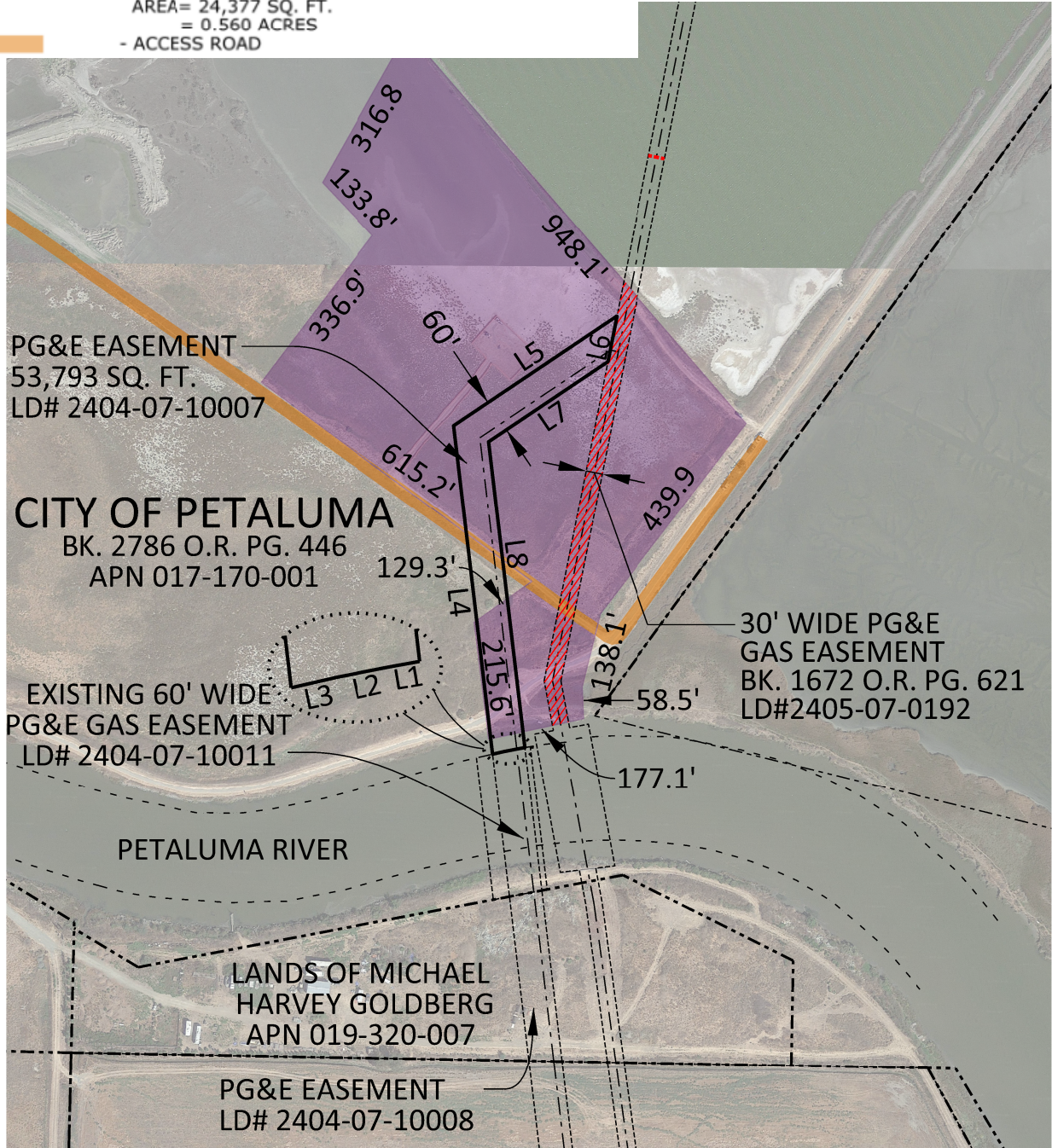


# LEGEND

- PROPERTY LINE
- PROPOSED PG&E EASEMENT LINE
- PG&E EXISTING EASEMENT LINE
- PG&E EASEMENT CENTER LINE
- OFFICIAL RECORDS
- ASSESSOR'S PARCEL NUMBER
- WORK SPACE  
AREA= 506,887 SQ. FT.  
= 11.637 ACRES
- PORTION ENCUMBERED BY 30' PG&E GAS EASEMENT  
PER BK. 1672 O.R. PG. 621, SONOMA COUNTY RECORDS  
LD# 24045-07-0192  
AREA= 24,377 SQ. FT.  
= 0.560 ACRES
- ACCESS ROAD

0 150 300  
1 INCH = 300 FEET



AUTHORIZATION  
74030729

BY —  
DR RLJS  
CH J6F9  
O.K. J6F9  
DATE 4/11/2022

**APPRAISAL EXHIBIT**  
LANDS OF CITY OF PETALUMA  
R-708-L-021G PETALUMA  
PETALUMA RIVER CROSSING\_4  
**PETALUMA, CALIFORNIA**  
PACIFIC GAS AND ELECTRIC COMPANY  
San Francisco California



PROJ. NO.		
AREA	AREA 7, NORTH COAST	
COUNTY	SONOMA	
SCALE	1 INCH = 300 FEET	
SHEET NO.	2 OF 2	
DRAWING NUMBER	L-10538	
CHANGE	0	